

# ŠKODA 1101



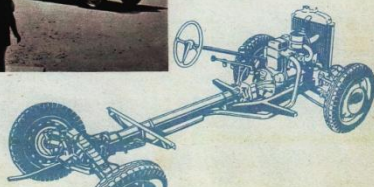
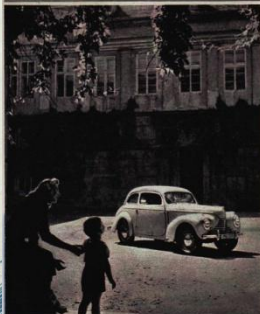
## Škoda motors all over the world

The "SKODA-1101 MOTORS" the noteworthy success of which in the international markets prior to the war, is still being remembered and which won outstanding victories in international competitions and races, have been further improved after the war. The new "SKODA-1101" is the result of successful endeavours of our technical designers to incorporate in it the latest technical achievements.

The "SKODA-1101" is supplied to all parts of the world where it is highly valued for its excellent driving properties. It is proving daily its high technical standard and quality under the most diversified conditions of ground and climate in the heat of the tropical sun, in the frosty climate of northern countries, on flat ground as well as on hills, on the best roads as well as on the poorest ones, on

concrete and in the sands of Sahara. In contests of elegance and in races the "SKODA-1101" is just as successful. Its elegant, spacious, and luxurious body captures the attention at first sight. Also the chassis with tubular frame bifurcated at the front, and fitted with independent suspension of both the front and rear wheels, has been improved and re-designed in many details. The 4-cylinder 4-stroke engine is distinguished by its elastic and silent running. A 4-speed synchromesh gearbox forming with the engine a solid unit, hydraulic brakes, central lubrication system, water cooling with pump and thermostat complete the characteristic features of the car. The "SKODA-1101" is carefully manufactured of first-grade materials ensuring long life, dependability and economy. Its petrol consumption is a mere 8 litres per 100 km or 35 m. p. g. This model represents one of the most advanced designs of its class and is the subject of a lively interest abroad as testified by substantial deliveries to all parts of the world.

The ENGINE is a four-cylinder, four-stroke water-cooled unit with overhead valves, output 32 HP, cylinder capacity 1,1 litres, bore 68 mm, stroke 75 mm. The crankshaft fitted with counter-weights runs in three bearings. This engine has proved its power and low consumption in thousands of SKODA "TEN" and "EVEN" cars. In the new model it has been improved and equipped with a new three-point elastic suspension eliminating transmission of vibration. The ribbed aluminium bottom of the crankcase allows an efficient cooling of oil. The CIRCULATING LUBRICATION SYSTEM ensures long life of all bearings. The oil is kept in good condition by an efficient oil cleaner and perfect ventilation of the crankcase. Nonetheless running is effected by a suction silencer. The fuel piping is provided with a trap for the separation of water and impurities. The CHASSIS is formed by a strong steel tube backbone bifurcated in front to take the rubber mounted engine designed in one block with the four-speed gearbox. The second, third and fourth gears are silent, and the third and fourth are synchronized. All the shafts of the gearbox run in ball and needle bearings. A dry single-disc clutch may easily be disengaged and guarantees soft engagement. The SCREW- and NUT STEERING fitted with a large self-returning steering wheel ensures easy control. SAFE DRIVING even at high speeds and on poor roads is guaranteed by a perfectly designed independent suspension of all four wheels in conjunction with dependable hydraulic brakes. The rear transverse spring is arranged above the rear axle, the



- ELEGANCE,
- COMFORT,
- QUALITY,
- EASY CONTROL,
- SAFETY,
- ECONOMY,
- LONG LIFE.

Tubular backbone chassis bifurcated at the front, engine mounted on three rubber pads, independent suspension of all four wheels, four-speed synchromesh gear box, hydraulic brakes, central lubrication.

front spring is fitted with hydraulic shock absorbers. The spring suspensions and the swinging semi-axes are placed in silentbloks. The new design of brakes consists of enlarged braking surfaces and a simplified adjustment. The statically and dynamically balanced propeller shaft is fitted with universal joints running in needle bearings of exceptional durability. A central lubricating system renders operation and maintenance very simple. The BODY. An attractive grill trimmed with polished lattices of light metal, the mudguards of a modern shape with flushed head lights and the entire form of the body make the car uncommonly elegant. A comely dashboard fitted with clearly arranged instruments and space to take a radio, an elegant steering wheel and a glove compartment with lid complete the inner equipment. Folding rear windows permit draft-free ventilation. A large lockable space for luggage is accessible from both inside and outside.

#### PRINCIPAL DATA:

Overall length 4,050, width 1,500 and height 1,520 mm (delivery van 1,680 mm). Maximum speed over 100 km per hour, or 60 M. p. h. Consumption abt. 8 litres per 100 km or 35 m. p. g. Fuel tank capacity 35 litres or 7½ gallons with reserve for 50 km, sufficient for about 400 km or 240 miles. Weight in working order cca 900 kg. All modifications reserved.



The "SKODA-1101" has proved its high standard and the possibility of its all-round use on long-distance journeys. It crossed alone, without any assistance from other cars, the Sahara desert and overcame all difficulties of the ground and the tropical sun. This is an eloquent proof of its utmost reliability and safety in operation.

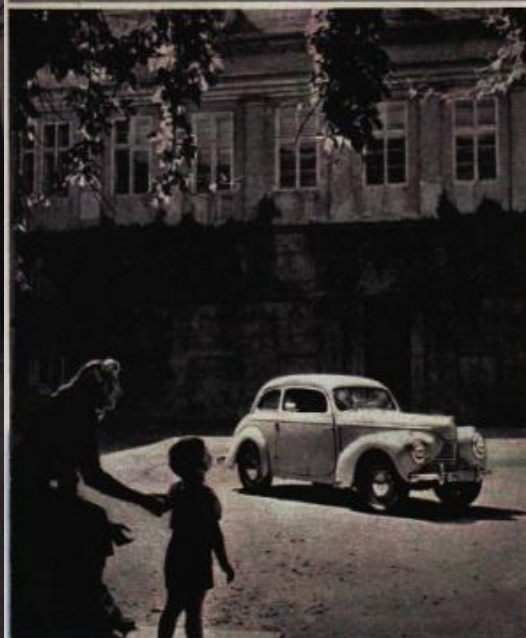
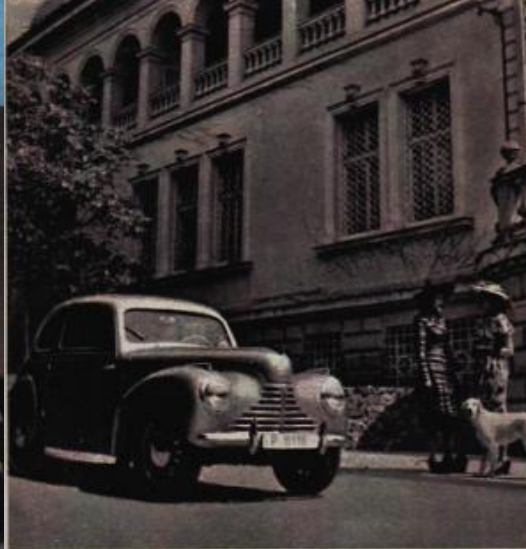


Škoda  1101

**KOYO LIMITED**  
METAL & ENGINEERING PRODUCTS AND RAW MATERIALS  
TRADING COMPANY  
**ENTERPRISE IV**  
PRAGUE - CZECHOSLOVAKIA

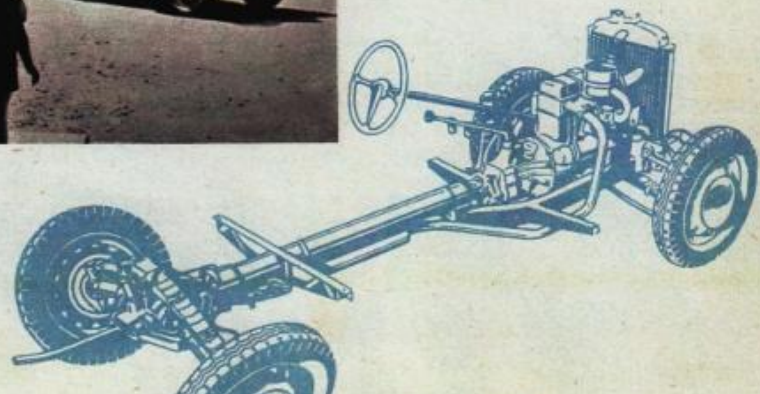


# ŠKODA 1101



- ELEGANCE,
- COMFORT,
- QUALITY,
- EASY CONTROL,
- SAFETY,
- ECONOMY,
- LONG LIFE.

Tubular backbone chassis bifurcated at the front, engine mounted on three rubber pads, independent suspension of all four wheels, four-speed synchronized gear box, hydraulic brakes, central lubrication.





# Skoda motors all over the world

The "SKODA-1101 MOTORS" the noteworthy success of which in the international markets prior to the war is still being remembered and which won outstanding victories in international competitions and races, have been further improved after the war. The new "SKODA-1101" is the result of successful endeavours of our technical designers to incorporate in it the latest technical achievements.

The "SKODA-1101" is supplied to all parts of the world where it is highly valued for its excellent driving properties. It is proving daily its high technical standard and quality under the most diversified conditions of ground and climate in the heat of the tropical sun, in the frosty climate of northern countries, on flat ground as well as on hills, on the best roads as well as on the poorest, on

concrete and in the sands of Sahara. In contests of elegance and in races the "SKODA-1101" is just as successful.

Its elegant, spacious, and luxurious body captures the attention at first sight. Also the chassis with tubular frame bifurcated at the front, and fitted with independent suspension of both the front and rear wheels, has been improved and re-designed in many details. The 4-cylinder 4-stroke engine is distinguished by its elastic and silent running. A 4-speed synchromesh gearbox forming with the engine a solid unit, hydraulic brakes, central lubrication system, water cooling with pump and thermostat complete the characteristic features of the car. The "SKODA-1101" is carefully manufactured of first-grade materials ensuring long life, dependability and economy. Its petrol consumption is a mere 8 litres per 100 km or 35 m. p. g. This model represents one of the most advanced designs of its class and is the subject of a lively interest abroad as testified by substantial deliveries to all parts of the world.

The ENGINE is a four-cylinder, four-stroke water-cooled unit with overhead valves, output 32 HP, cylinder capacity 1,1 litres, bore 68 mm, stroke 75 mm. The crankshaft fitted with counter-weights runs in three bearings. This engine has proved its power and low consumption in thousands of SKODA "TEN" and "ELEVEN" cars. In the new model it has been improved and equipped with a new three-point elastic suspension eliminating transmission of vibration. The ribbed aluminium bottom of the crankcase allows an efficient cooling of oil. The CIRCULATING LUBRICATION SYSTEM ensures long life of all bearings. The oil is kept in good condition by an efficient oil cleaner and perfect ventilation of the crankcase. Noiseless running is effected by a suction silencer. The fuel piping is provided with a trap for the separation of water and impurities. The CHASSIS is formed by a strong steel tube backbone bifurcated in front to take the rubber-mounted engine designed in one block with the four-speed gearbox. The second, third and fourth gears are silent, and the third and fourth are synchronized. All the shafts of the gearbox run in ball and needle bearings. A dry single-disc clutch may easily be disengaged and guarantees soft engagement. The SCREW- and -NUT STEERING fitted with a large self-returning steering wheel ensures easy control. SAFE DRIVING even at high speeds and on poor roads is guaranteed by a perfectly designed independent suspension of all four wheels in conjunction with dependable hydraulic brakes. The rear transverse spring is arranged above the rear axle, the

front spring is fitted with hydraulic shock absorbers. The spring suspensions and the swinging semi-axes are placed in silentblocs. The new design of brakes consists of enlarged braking surfaces and a simplified adjustment. The statically and dynamically balanced propeller shaft is fitted with universal joints running in needle bearings of exceptional durability. A central lubricating system renders operation and maintenance very simple. **The BODY.** An attractive grill trimmed with polished lattices of light metal, the mudguards of a modern shape with flushed head lights and the entire form of the body make the car uncommonly elegant. A comely dashboard fitted with clearly arranged instruments and space to take a radio, an elegant steering wheel and a glove compartment with lid complete the inner equipment. Folding rear windows permit draft-free ventilation. A large locable space for luggage is accessible from both inside and outside.

**PRINCIPAL DATA:**

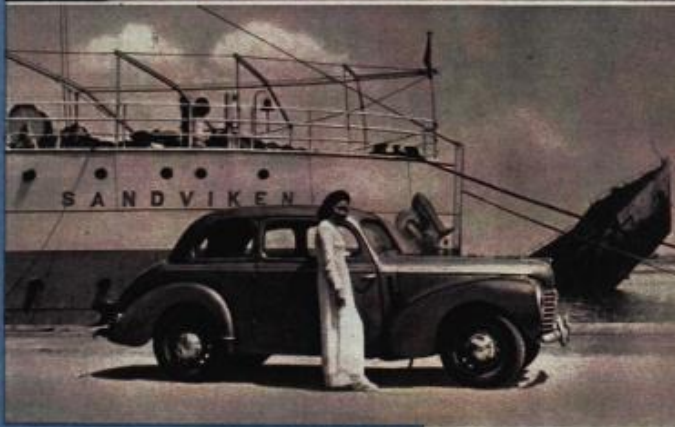
Overall length 4,050, width 1,500 and height 1,520 mm (delivery van 1,680 mm). Maximum speed over 100 km per hour. or 60 M. p. h. Consumption abt. 8 litres per 100 km or 35 m. p. g. Fuel tank capacity 35 litres or 7½ gallons with reserve for 50 km, sufficient for about 400 km or 240 miles. Weight in working order cca 900 kg. All modifications reserved.



Škoda



1101



The "SKODA-1101" has proved its high standard and the possible round use on long-distance journeys. It crossed alone, without any other cars, the Sahara desert and overcame all difficulties of and the tropical sun. This is an eloquent proof of its utmost safety in operation.



**KOVO** LIMITED  
METAL & ENGINEERING PRODUCTS AND RAW MATERIALS  
TRADING COMPANY  
**ENTERPRISE IV**  
PRAGUE - CZECHOSLOVAKIA